

**7 X 7**

**STALKCUTTERS**

**MOUNTED ON HEAVY DUTY TOOL BARS**

**FEATURES**

- Double 7x 7 Frame
- Heavy Duty Three Point Hitch
- 6 Blade Reels Mounted on Front Bar
- 8 Blade Reels Mounted on Rear Bar
- Straight or Angles Reel Mounting
- Bolt on Units Allow for Various Row Widths

**OPTIONS**

- Individual Row Covers
- 4" x 4" Utility Bar
- Custom Tool Bar Hinge
- Custom Row Configurations



**SAM STEVENS INC.**  
2101 Lubbock Hwy.  
Lamesa, Texas 79331

MANUFACTURER OF QUALITY FARM EQUIPMENT  
Phone: 806-872-8365 Fax: 806-872-8368

## **7 x 7 DOUBLE STALKCUTTER**



**7 X 7**  
**DOUBLE STALKCUTTER**

with  
**CATEGORY 3 HITCH**  
 and  
**FRONT 6 and REAR 8**

**WITHOUT COVER**

PART NO.	BAR SIZE	BLADE LENGTH	WEIGHT
DSK - 2001	1/4	6 - Row (40")	4160 lbs.
DSK - 2002	1/4	8 - Row (40")	5000 lbs.
DSK - 2003	3/8	10 - Row (40")	7140 lbs.
DSK - 2004	3/8	12 - Row (40")	9200 lbs.
DSK - 2005	3/8	16 - Row (40")	
DSK - 2006	1/4	8 - Row (30")	4850 lbs.
DSK - 2007	1/4	10 - Row (30")	6000 lbs.
DSK - 2008	3/8	12 - Row (30")	7840 lbs.
DSK - 2009	1/4	8 - Row (32")	4930 lbs.
DSK - 2010	1/4	10 - Row (32")	6165 lbs.
DSK - 2011	3/8	12 - Row (32")	7860 lbs.

**WITH 4 x 4 and WITHOUT COVER**

PART NO.	BAR SIZE	BLADE LENGTH	WEIGHT
DSK - 2012	1/4	6 - Row (40")	4160 lbs.
DSK - 2013	1/4	8 - Row (40")	5000 lbs.
DSK - 2014	3/8	10 - Row (40")	7140 lbs.
DSK - 2015	3/8	12 - Row (40")	9200 lbs.
DSK - 2016	3/8	16 - Row (40")	
DSK - 2017	1/4	8 - Row (30")	4850 lbs.
DSK - 2018	1/4	10 - Row (30")	6000 lbs.
DSK - 2019	3/8	12 - Row (30")	7840 lbs.
DSK - 2020	1/4	8 - Row (32")	4930 lbs.
DSK - 2021	1/4	10 - Row (32")	6165 lbs.
DSK - 2022	3/8	12 - Row (32")	7860 lbs.

**REPLACEMENT PARTS**

PART NO.	DESCRIPTION
DSK - P021	Covers
DSK - P022	Brackets ( Channel Iron )
DSK - P023	# 24 Reel (short shaft) 6 Blade ( 24 1/2" Shaft )
DSK - P024	# 24 Reel (short shaft) 8 Blade ( 24 1/2" Shaft )
DSK - P025	1 3/8" Bearing <b>WITH</b> Housing ( 4 Bolt Flange Bearing )(F3W222E)
DSK - P026	Hinge Complete
DSK - P027	Hitch on Both Sides

**STALKCUTTER REPAIR PARTS**

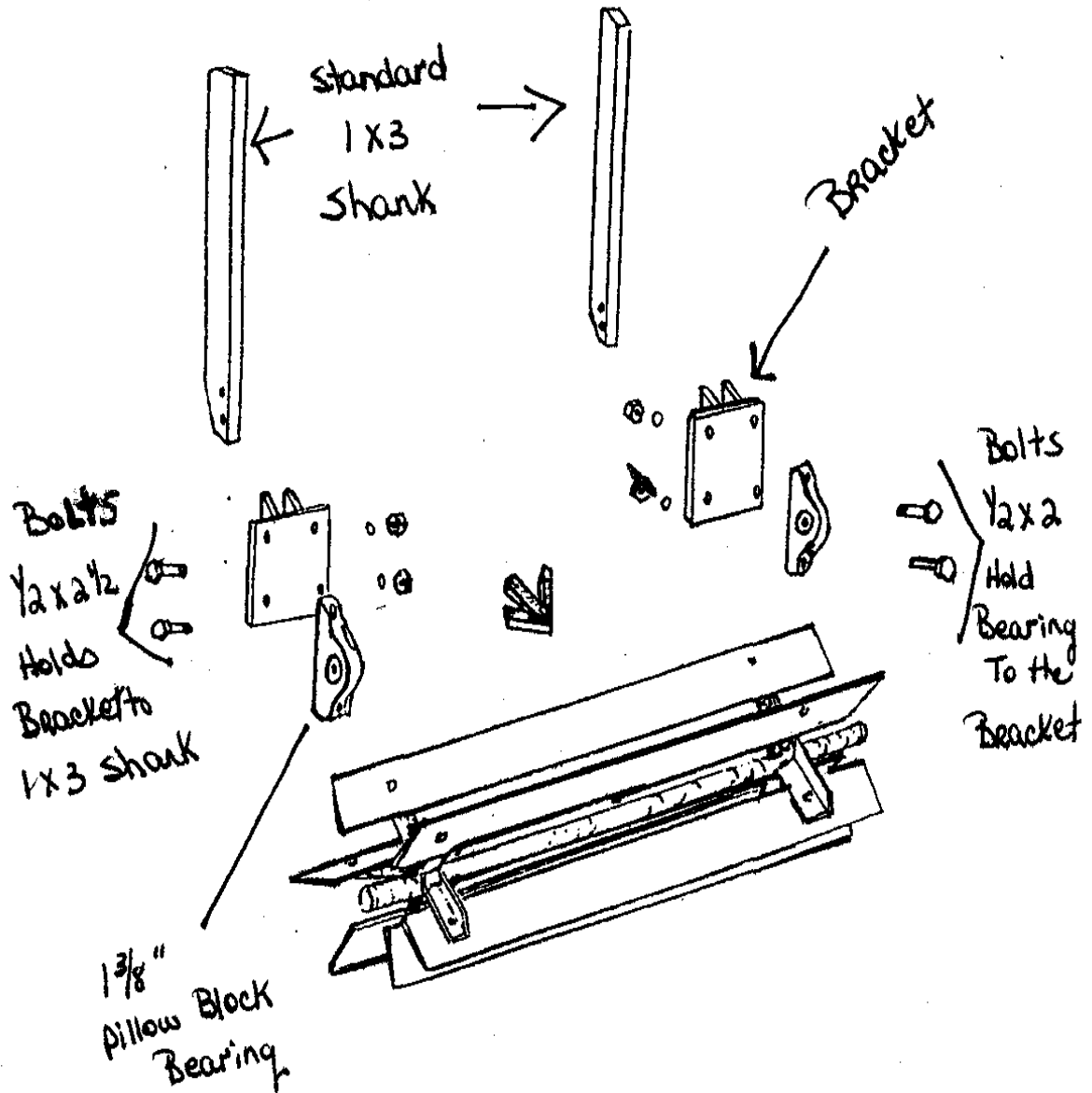
<b>PART NO.</b>	<b>DESCRIPTION</b>	<b>WEIGHT</b>
STK - P027	SS # 14 Stalkcutter Blade ( 7 1/2" HC )	4 lbs.
STK - P028	SS # 16 Stalkcutter Blade ( 9" HC )	4-1/2 lbs.
STK - P029	SS # 18 Stalkcutter Blade ( 11 HC )	5-1/4 lbs.
STK - P030	SS # 24 Stalkcutter Blade ( 16 1/2" HC )	6-1/2 lbs.
STK - P031	SS # 30 Stalkcutter Blade ( 22 1/2" HC )	8-3/4 lbs.
STK - P032	SS # 30 Stalkcutter Blade ( 3 Hole )	8-3/4 lbs.
STK - P033	SS # 34 Stalkcutter Blade ( 3 Hole )	10 lbs.
STK - P034	PW # 18 Stalkcutter Blade ( 8" HC )	5 lbs.
STK - P035	PW # 30 Stalkcutter Blade ( 22" HC )	8-3/4 lbs.
STK - P036	PW # 30 Stalkcutter Blade ( 26" HC )	8-3/4 lbs.
STK - P037	PW # 30 Stalkcutter Blade (13" HC ) 3 Hole	8-3/4 lbs.
STK - P038	Crust Buster 30" Blade ( 3 hole - 12" HC )	
STK - P039	PD # Top Bushing for P/D ( Wobble )	
STK - P040	PD # 31" Shaft, 24 1/2 - 1 1/2 Thread	
STK - P041	Spider, 6 Blade	
STK - P042	Spider, 8 Blade	
STK - P062	Two Spider Reel for Single H-Beam Stalkcutter	
STK - P063	Three Spider Reel for Double H-Beam Stalkcutter	

STK - P043	# 12 ( 6 Blade ) Reel <b>WITH</b> Bearings	
STK - P044	# 14 ( 6 Blade ) Reel <b>WITH</b> Bearings	57 lbs.
STK - P045	# 16 ( 6 Blade ) Reel <b>WITH</b> Bearings	64 lbs.
STK - P063	# 20 ( 6 Blade ) Reel <b>WITH</b> Bearings	
STK - P064	# 20 ( 6 Blade ) Reel <b>WITHOUT</b> Bearings	
STK - P046	# 24 ( 6 Blade ) Reel <b>WITH</b> Bearings	85 lbs.
STK - P047	# 30 ( 6 Blade ) Reel <b>WITH</b> Bearings	100 lbs.
STK - P062	# 16 ( 8 Blade ) Reel <b>WITH</b> Bearings	
STK - P065	# 20 ( 8 Blade ) Reel <b>WITH</b> Bearings	
STK - P066	# 20 ( 8 Blade ) Reel <b>WITHOUT</b> Bearings	
STK - P048	# 24 ( 8 Blade ) Reel <b>WITH</b> Bearings	100 lbs.
STK - P049	# 30 ( 8 Blade ) Reel <b>WITH</b> Bearings	121 lbs.
STK - P050	# 24 ( 6 Blade ) Pipe and Shaft	95 lbs.
STK - P051	# 30 ( 6 Blade ) Pipe and Shaft	108 lbs.

STK - P052	# 7 Bracket fits 1x3 Shank ( 34" or 40" Row Spacing )	13 lbs.
STK - P053	# 3 Bracket fits 1x3 Shank ( 36" or 30" Row Spacing )	9 lbs.
STK - P054	# 5 Bracket fits 1x3 Shank ( 32" or 30" Row Spacing )	11 lbs.
STK - P055	1 3/8" Bearing <b>WITH</b> Collar ( WG222EL )	
STK - P056	1 3/8" Bearing <b>WITH</b> Housing ( 2 Bolt Pillow Block Bearing ) ( PL3W222E )	
DSK - P025	1 3/8" Bearing <b>WITH</b> Housing ( 4 Bolt Flange Bearing ) for a 7x7 Stalkcutter ( F3W222E )	
STK - P057	Housing <b>ONLY</b> for a 4 Bolt Flange	
STK - P060	1 1/4" Bearing <b>WITH</b> Housing ( PL3W220E )	
STK - P061	1 1/4" Bearing, <b>WITH</b> Collar ( PL3W220E )	
HTP - 0126	1 1/4" Hitch Pin <b>WITH</b> Flat for Stalkcutter or Sandfighter	
HTP - 0127	1 7/16" Hitch Pin <b>WITH</b> Flat for Stalkcutter or Sandfighter	

**STALKCUTTER REPAIR PARTS**

**1 x 3 BOLT ON BRACKET**



# SINGLE STALKCUTTER

## 6 BLADE REELS 7 x 7 FRAME ADJUSTABLE BRACKET

PART NO.	DESCRIPTION	WEIGHT
SSK - 2088	<b>6 - Row 40" Solid Frame Stalkcutter</b>	
	<u>WITH</u> 6 Blade Reel	2232 lbs.
SSK - 2089	<b>8 - Row 40" Solid Frame Stalkcutter</b>	
	<u>WITH</u> 6 Blade Reel	2450 lbs.
SSK - 2090	<u>WITH</u> 6 Blade Reel and Cover	2573 lbs.
SSK - 2091	<u>WITH</u> 6 Blade Reel and Cover and	
	4" Tubing on back 10" in between	3016 lbs.
SSK - 2092	<u>WITH</u> 6 Blade Reel, H.D.Hinge, Cover,	
	Cylinder and Hose	
SSK - 2093	<b>10 - Row 40" Solid Frame Stalkcutter</b>	
	<u>WITH</u> 6 Blade Reel	3380 lbs.
SSK - 2094	<u>WITH</u> 6 Blade Reel and Cover	3510 lbs.
SSK - 2095	<b>12 - Row 40" Solid Frame Stalkcutter</b>	
	<u>WITH</u> 6 Blade Reel	3790 lbs.
SSK - 2096	<u>WITH</u> 6 Blade Reel and Cover	3945 lbs.
SSK - 2097	<b>8 - Row 30" Solid Frame Stalkcutter</b>	
	<u>WITH</u> 6 Blade Reel	2050 lbs.
SSK - 2098	<u>WITH</u> 6 Blade Reel and Cover	2145 lbs.
SSK - 2099	<b>8 - Row 32" Solid Frame Stalkcutter</b>	
	<u>WITH</u> 6 Blade Reel	2105 lbs.
SSK - 2100	<u>WITH</u> 6 Blade Reel and Cover	2210 lbs.
SSK - 2101	<b>10 - Row 30" Solid Frame Stalkcutter</b>	
	<u>WITH</u> 6 Blade Reel	2950 lbs.
SSK - 2102	<u>WITH</u> 6 Blade Reel and Cover	3065 lbs.
SSK - 2103	<b>10 - Row 32" Solid Frame Stalkcutter</b>	
	<u>WITH</u> 6 Blade Reel	3010 lbs.
SSK - 2104	<u>WITH</u> 6 Blade Reel and Cover	3130 lbs.
SSK - 2105	<b>12 - Row 30" Solid Frame Stalkcutter</b>	
	<u>WITH</u> 6 Blade Reel	2990 lbs.
SSK - 2106	<u>WITH</u> 6 Blade Reel and Cover	3130 lbs.
SSK - 2107	<b>12 - Row 32" Solid Frame Stalkcutter</b>	
	<u>WITH</u> 6 Blade Reel	3010 lbs.
SSK - 2108	<u>WITH</u> 6 Blade Reel and Cover	3215 lbs.

**SAM STEVENS INC.**  
2101 Lubbock Hwy.  
Lamesa, Texas 79331

MANUFACTURER OF QUALITY FARM EQUIPMENT  
Phone: 806-872-8365 Fax: 806-872-8368

**DOUBLE REEL STALKCUTTER**

**H-BEAM**

**REPLACEMENT PARTS**

<b>PART NO.</b>	<b>DESCRIPTION</b>	<b>WEIGHT</b>
DRS - P146	#30 Reel ( 6 Blade ) <b>WITH</b> Bearings	199 lbs.
DRS - P147	#30 Reel ( 8 Blade ) <b>WITH</b> Bearings	154 lbs.
DRS - P148	Narrow Reel ( 6 Blade ) <b>WITH</b> Bearings	
DRS - P149	Narrow Reel ( 8 Blade ) <b>WITH</b> Bearings	
DSK - P026	Hinge Complete	
STK - P063	Three Spider Reels	

# DOUBLE REEL STALKCUTTER

## H-BEAM

**FRONT REELS ARE 6 BLADE AND BACK REELS ARE 8 BLADE**

### ANGLED REELS

#### WITH COVER

<b>PART NO.</b>	<b>ROW</b>	<b>WEIGHT</b>
DRS - 2113	6 - Row 40" Double Reel	3950 lbs.
DRS - 2114	8 - Row 40" Double Reel	5545 lbs.
DRS - 2115	10 - Row 40" Double Reel	6790 lbs.
DRS - 2116	12 - Row 40" Double Reel	7950 lbs.
DRS - 2117	6 - Row 30" Double Reel	3780 lbs.
DRS - 2118	8 - Row 30" Double Reel	5040 lbs.
DRS - 2119	8 - Row 32" Double Reel	5110 lbs.
DRS - 2120	10 - Row 30" Double Reel	6095 lbs.
DRS - 2121	10 - Row 32" Double Reel	6180 lbs.
DRS - 2122	12 - Row 30" Double Reel	7155 lbs.
DRS - 2123	12 - Row 32" Double Reel	7400 lbs.

#### WITH COVER AND 4 X 4

<b>PART NO.</b>	<b>ROW</b>	<b>WEIGHT</b>
DRS - 2124	6 - Row 40" Double Reel	3950 lbs.
DRS - 2125	8 - Row 40" Double Reel	5545 lbs.
DRS - 2126	10 - Row 40" Double Reel	6790 lbs.
DRS - 2127	12 - Row 40" Double Reel	7950 lbs.
DRS - 2128	6 - Row 30" Double Reel	3780 lbs.
DRS - 2129	8 - Row 30" Double Reel	5040 lbs.
DRS - 2130	8 - Row 32" Double Reel	5110 lbs.
DRS - 2131	10 - Row 30" Double Reel	6095 lbs.
DRS - 2132	10 - Row 32" Double Reel	6180 lbs.
DRS - 2133	12 - Row 30" Double Reel	7155 lbs.
DRS - 2134	12 - Row 32" Double Reel	7400 lbs.

**\*\*\* H-Beam Double Reel Stalkcutter uses 3 Spider Reel \*\*\***

# DOUBLE REEL STALKCUTTER

## H-BEAM

**FRONT REELS ARE 6 BLADE AND BACK REELS ARE 8 BLADE**

### ANGLED REELS

#### WITHOUT COVER

<b>PART NO.</b>	<b>ROW</b>	<b>WEIGHT</b>
DRS - 2135	6 - Row 40" Double Reel	3950 lbs.
DRS - 2136	8 - Row 40" Double Reel	5545 lbs.
DRS - 2137	10 - Row 40" Double Reel	6790 lbs.
DRS - 2138	12 - Row 40" Double Reel	7950 lbs.
DRS - 2139	6 - Row 30" Double Reel	3780 lbs.
DRS - 2140	8 - Row 30" Double Reel	5040 lbs.
DRS - 2141	8 - Row 32" Double Reel	5110 lbs.
DRS - 2142	10 - Row 30" Double Reel	6095 lbs.
DRS - 2143	10 - Row 32" Double Reel	6180 lbs.
DRS - 2144	12 - Row 30" Double Reel	7155 lbs.
DRS - 2145	12 - Row 32" Double Reel	7400 lbs.

#### WITHOUT COVER WITH 4 x 4

<b>PART NO.</b>	<b>ROW</b>	<b>WEIGHT</b>
DRS - 2146	6 - Row 40" Double Reel	3950 lbs.
DRS - 2147	8 - Row 40" Double Reel	5545 lbs.
DRS - 2148	10 - Row 40" Double Reel	6790 lbs.
DRS - 2149	12 - Row 40" Double Reel	7950 lbs.
DRS - 2150	6 - Row 30" Double Reel	3780 lbs.
DRS - 2151	8 - Row 30" Double Reel	5040 lbs.
DRS - 2152	8 - Row 32" Double Reel	5110 lbs.
DRS - 2153	10 - Row 30" Double Reel	6095 lbs.
DRS - 2154	10 - Row 32" Double Reel	6180 lbs.
DRS - 2155	12 - Row 30" Double Reel	7155 lbs.
DRS - 2156	12 - Row 32" Double Reel	7400 lbs.

**\*\*\* H-Beam Double Reel Stalkcutter uses 3 Spider Reel \*\*\***

# SINGLE STALKCUTTER

## 6 BLADE REELS

### H - BEAM FRAME

PART NO.	DESCRIPTION	WEIGHT
SSK - H088	<b>6 - Row 40" Stalkcutter</b>	
	<u>WITH</u> 6 Blade Reel	2232 lbs.

#### **8 - Row 40" Stalkcutter**

SSK - H089	<u>WITH</u> 6 Blade Reel	2450 lbs.
SSK - H090	<u>WITH</u> 6 Blade Reel and Cover	2573 lbs.
SSK - H091	<u>WITH</u> 6 Blade Reel and Cover and <b>WITH</b> 4" Tubing on back 10" in between	3016 lbs.
SSK - H092	<u>WITH</u> 6 Blade Reel, H.D.Hinge, Cover, Cylinder and Hose	

#### **10 - Row 40" Stalkcutter**

SSK - H093	<u>WITH</u> 6 Blade Reel	3380 lbs.
SSK - H094	<u>WITH</u> 6 Blade Reel and Cover	3510 lbs.

#### **12 - Row 40" Stalkcutter**

SSK - H095	<u>WITH</u> 6 Blade Reel	3790 lbs.
SSK - H096	<u>WITH</u> 6 Blade Reel and Cover	3945 lbs.

#### **8 - Row 30" Stalkcutter**

SSK - H097	<u>WITH</u> 6 Blade Reel	2050 lbs.
SSK - H098	<u>WITH</u> 6 Blade Reel and Cover	2145 lbs.

#### **8 - Row 32" Stalkcutter**

SSK - H099	<u>WITH</u> 6 Blade Reel	2105 lbs.
SSK - H100	<u>WITH</u> 6 Blade Reel and Cover	2210 lbs.

#### **10 - Row 30" Stalkcutter**

SSK - H101	<u>WITH</u> 6 Blade Reel	2950 lbs.
SSK - H102	<u>WITH</u> 6 Blade Reel and Cover	3065 lbs.

#### **10 - Row 32" Stalkcutter**

SSK - H103	<u>WITH</u> 6 Blade Reel	3010 lbs.
SSK - H104	<u>WITH</u> 6 Blade Reel and Cover	3130 lbs.

#### **12 - Row 30" Stalkcutter**

SSK - H105	<u>WITH</u> 6 Blade Reel	2990 lbs.
SSK - H106	<u>WITH</u> 6 Blade Reel and Cover	3130 lbs.

#### **12 - Row 32" Stalkcutter**

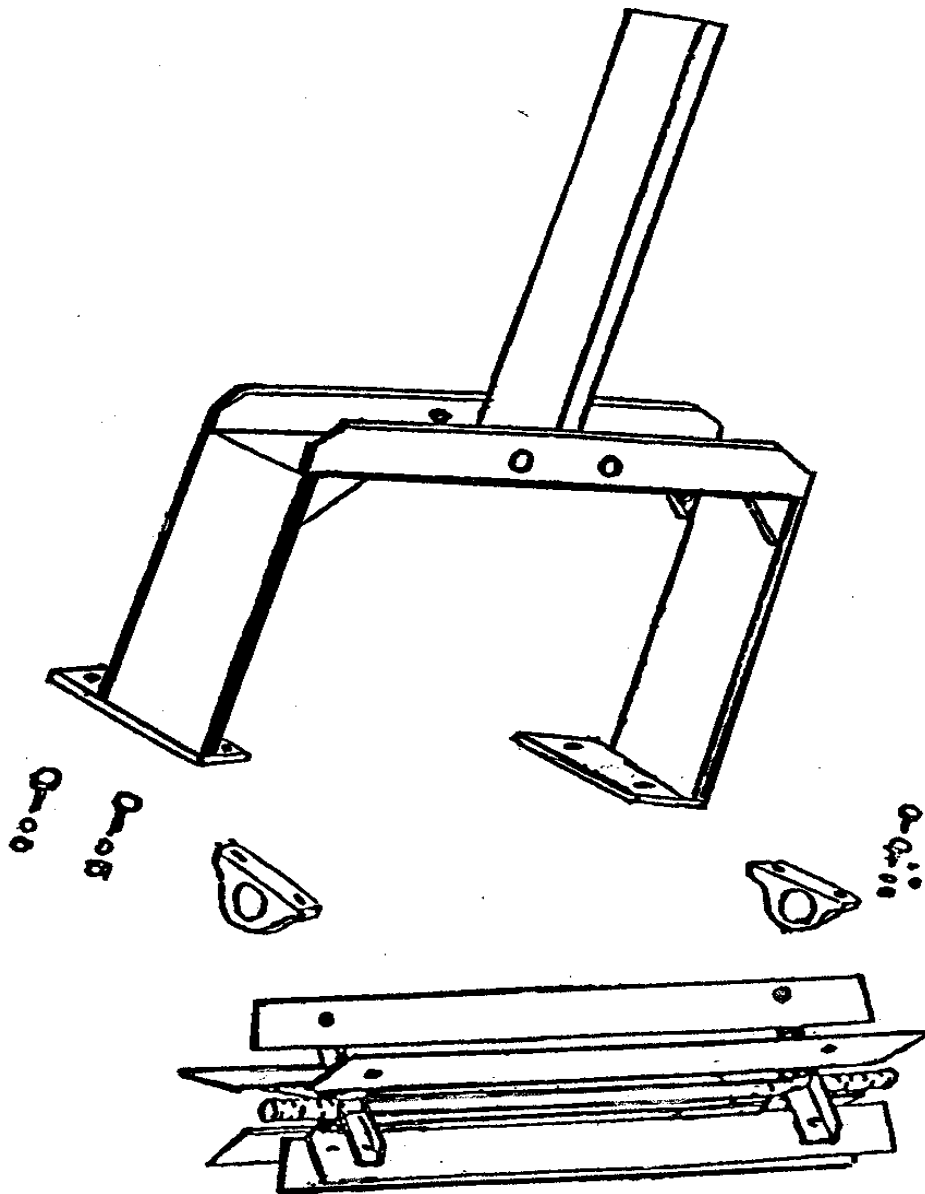
SSK - H107	<u>WITH</u> 6 Blade Reel	3010 lbs.
SSK - H108	<u>WITH</u> 6 Blade Reel and Cover	3215 lbs.

**\*\*\* H-Beam Single Reel Stalkcutter uses 2 Spider Reel \*\*\***

**SINGLE ROW STALKCUTTER UNIT**  
 WITH  
**SHANK**

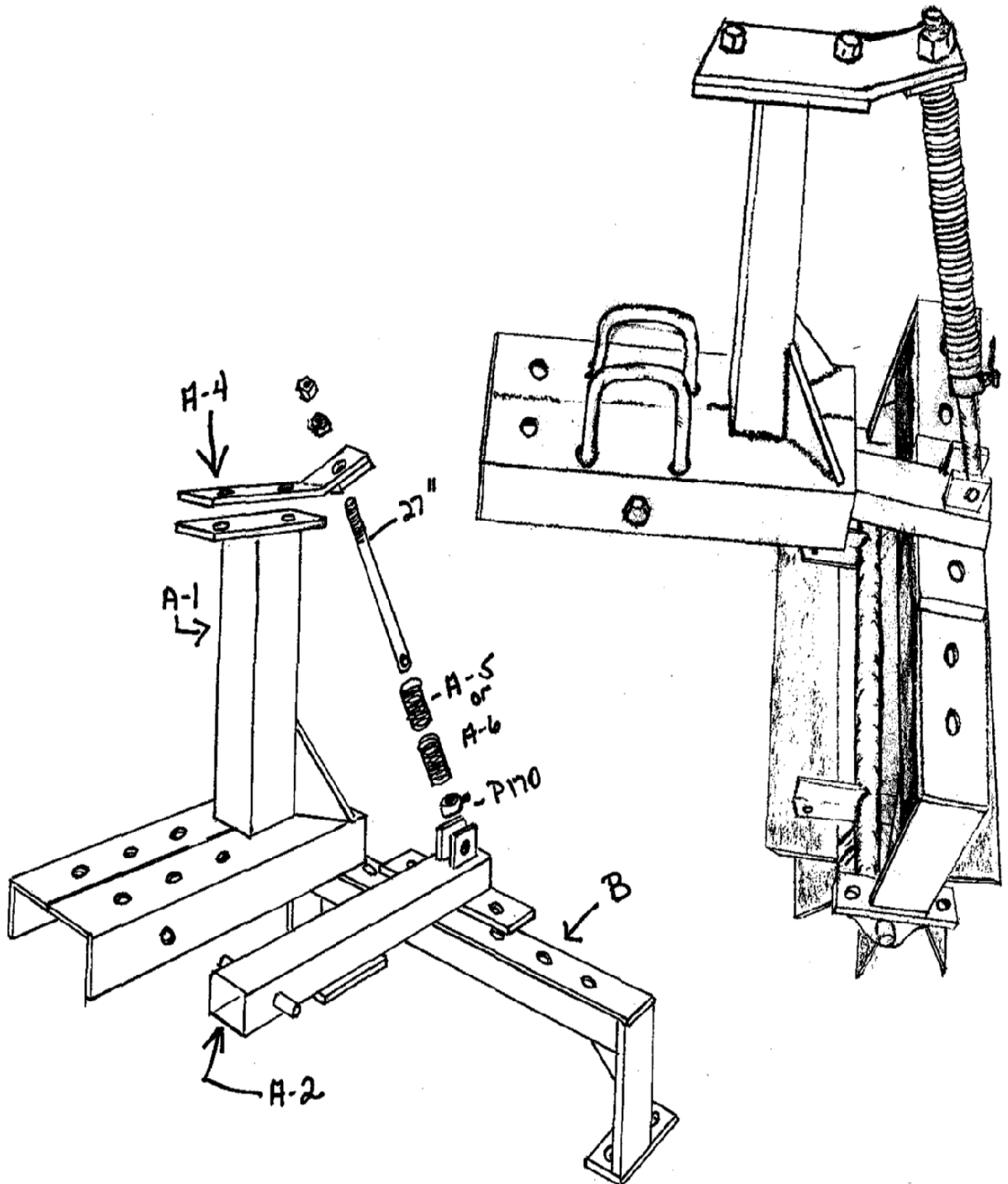
The Cutting reel is 16" wide with 16" blades and 1 3/8 Bearings

PART NO.	DESCRIPTION	WEIGHT
SRS - P151	Complete Unit <b>WITHOUT</b> Clamps	130 lbs.
SRS - P152	A Reel <b>WITH</b> 8 Blades	
SRS - P153	16" Bracket, <b>ONLY</b>	65 lbs.
SRS - P154	#16 Reel, <b>ONLY - WITHOUT</b> Bearings	68 lbs.
SRS - P155	Complete Unit <b>WITH</b> 12" Reel	125 lbs.
SRS - P156	Complete Unit <b>WITH</b> # 30 Reel	165 lbs.
STK - P056	1 3/8" Bearing <b>WITH</b> Housing ( 2 Bolt Pillow Block Bearing) ( PL3W222E )	



## SPRING LOADED STALKCUTTER

### REPLACEMENT PARTS



**SAM STEVENS INC.**2101 Lubbock Hwy.  
Lamesa, Texas 79331

MANUFACTURER OF QUALITY FARM EQUIPMENT

Phone: 806-872-8365

Fax: 806-872-8368

**SPRING LOADED STALKCUTTERS**

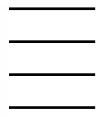
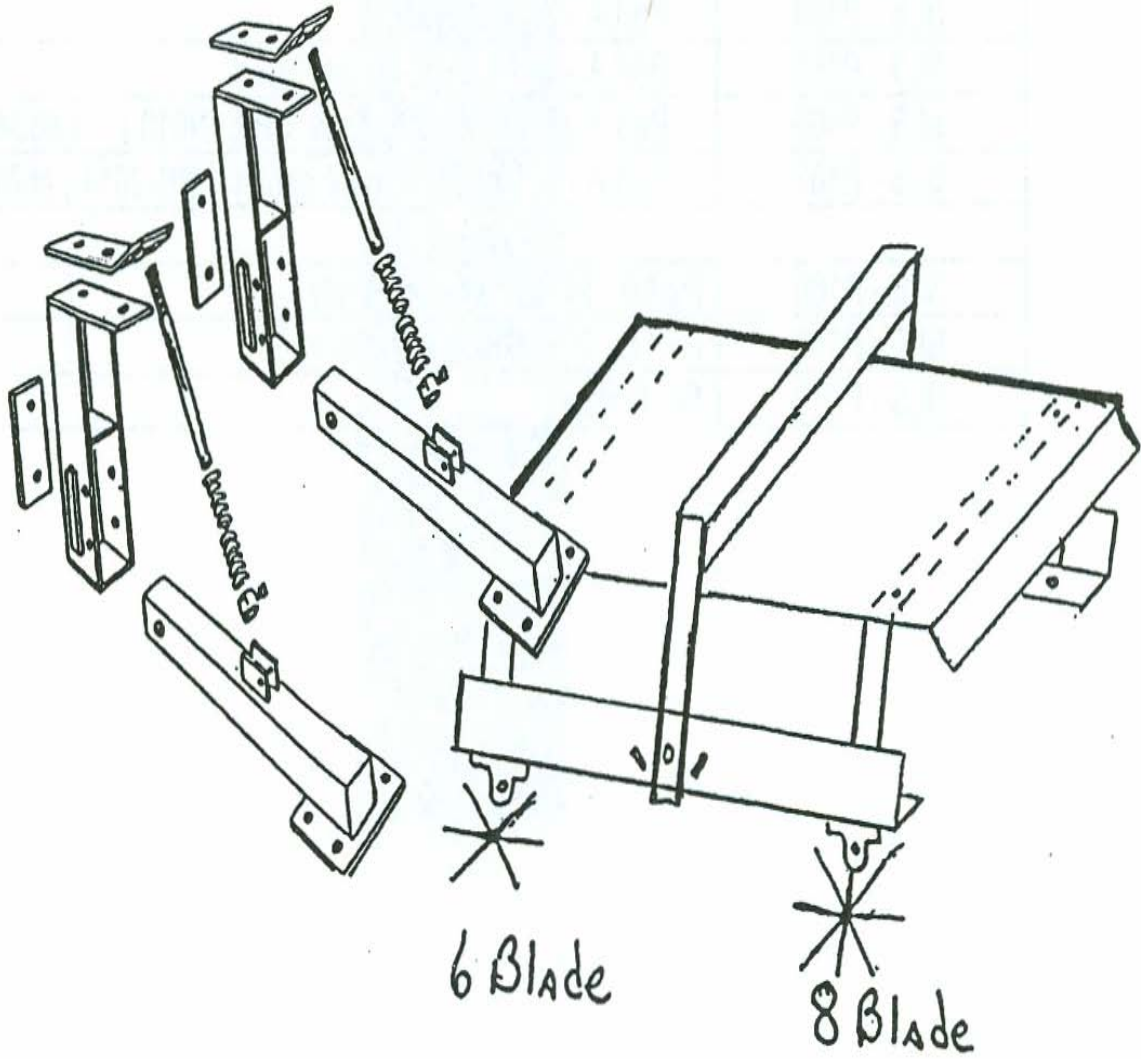
<b>PART NO.</b>	<b>DESCRIPTION</b>	<b>WEIGHT</b>
SLS - P157	Complete Reel Assembly on Bearings, # 24 Reel	253 lbs.
SLS - P158	Complete Reel Assembly on Bearings, # 30 Reel	272 lbs.
SLS - P159	# 24 Assembly <b><u>WITHOUT</u></b> Reels	150 lbs
SLS - P160	# 30 Assembly <b><u>WITHOUT</u></b> Reels	156 lbs.

**REPAIR AND REPLACEMENT PARTS**

<b>PART NO.</b>	<b>DESCRIPTION</b>	<b>WEIGHT</b>
SLS - P161	Part A ( Upper Assembly ) COMPLETE	113 lbs.
SLS - P162	Part A - 1 ( 4 x 4 Mast with Plate )	46 lbs.
SLS - P163	Part A - 2 ( Lower Arm )	31 lbs.
SLS - P164	Part A - 3 ( Spring Guide Rod )	10 lbs.
SLS - P165	Part A - 4 ( Top Wear Plate )	7 lbs.
SLS - P166	Part A - 5 ( takes 2 springs SPR - 9013 ) ( #33490 )	
SLS - P167	Part A - 6 ( takes 1 longer spring SPR-9014 ) (#70291)	
SLS - P168	Part B - 24 ( Lower Assembly )	38 lbs.
SLS - P169	Part B - 30 ( Lower Assembly )	44 lbs.
SLS - P170	Set Collars	

**SINGLE UNIT SPRING LOADED STALKCUTTER**

- WITH 2 Reels
- 6 Blades on Front
- 8 Blades on Back



**WIDE SPRING LOADED**

and

**SPECIAL STALKCUTTER UNITS**

Extra Length Units Used Primarily on Chisle and Harrow Plows as Attachments

PART NO.	DESCRIPTION	WEIGHT
WSS - 1172	60 - 31R52 Unit, 60" Blade Cut	425 lbs.
WSS - 1173	80 - 31R52 Unit, 80" Blade Cut	520 lbs.
WSS - 1174	84 - 31R52 Unit, 84" Blade Cut	525 lbs.
WSS - 1175	90 - 31R52 Unit, 90" Blade Cut	550 lbs.
WSS - 1176	96 - 31R52 Unit, 96" Blade Cut	575 lbs.

PART NO.	DESCRIPTION	WEIGHT
WSS - P177	60" Reel Units <b>WITH</b> Bearings ( 4 blade braces )	180 lbs.
WSS - P178	80" Reel Units <b>WITH</b> Bearings ( 5 blade braces )	230 lbs.
WSS - P179	84" Reel Units <b>WITH</b> Bearings ( 5 blade braces )	240 lbs.
WSS - P180	90" Reel Units <b>WITH</b> Bearings ( 5 blade braces )	250 lbs.
WSS - P181	60" Blade <b>WITH</b> Holes	18 lbs.
WSS - P182	80" Blade <b>WITH</b> Holes	24 lbs.
WSS - P183	84" Blade <b>WITH</b> Holes	25 lbs.
WSS - P184	90" Blade <b>WITH</b> Holes	27 lbs.
WSS - P185	F - Spring ( #33490 )	
WSS - P186	D - Spring Support Rod	10 lbs.
WSS - P187	E - Wear Pad <b>WITH</b> Socket Ball	
WSS - P188	Wobble Joint ( bushing with nut ) for 1" Rod	
WSS - P189	1" Rod, 27" Long	
WSS - P191	3/4" Nuts <b>WITH</b> Flat Washers	
WSS - P192	Bushings <b>WITH</b> Set Screws	
STK - P056	13/8" Bearing <b>WITH</b> Housing ( 2 Bolt Pillow Block Bearing ) ( PL3W222E )	

